

Brushed Lines | LVT

Interface®

Earth is the ultimate influencer. Even in the most industrial of spaces, we find traces of the natural world. Worn edges. Organic forms. Dusty colors. They ground us, connect us to the here and now.

Could we achieve that same effect with different materials?

The diffused linear texture of Brushed Lines evokes the familiar qualities of hard surfaces with a light-capturing quality that sparkles on the floor. Its subtle design features 22 solid colors ranging from warm and cool neutrals to pops of earthy, mineral-like tones. Given space, Brushed Lines delivers modern refinement inspired by raw and natural motifs.

Pair Brushed Lines LVT with SoundChoice™ backing with Interface carpet tiles for an integrated flooring system of hard and soft in planks and squares. Interface modular floors allow you to move from surface to surface without the need for transition strips.

Brushed Lines LVT is fully recyclable through our ReEntry™ program and contains a significant percentage of recycled content. As part of our global portfolio, all of the flooring products that we sell - carpet tile, LVT and rubber - are carbon neutral. Impactful on the floor. Impactful on the planet.

Carbon Neutral Floors™





LVT Brushed Lines Colour Celadon, Deep Cobalt Installed Ashlar



LVT product Brushed Lines Colour Alabaster, Rouge Installed Ashlar
Carpet Tile NY+LON Streets | Wheeler Street™ Colour Brown Square Installed Monolithic



LVT Brushed Lines **Colour** Graphite **Installed** Ashlar



LVT Brushed Lines **Colour** Soft Shadow **Installed** Ashlar
Carpet Tile NY+LON Streets™ | Reade Street™ **Colour** Iron Plate **Installed** Monolithic



LVT Brushed Lines Colour Blush Installed Ashlar
Carpet Tile NY+LON Streets | Broome street Colour Coral Glass Installed Non Directional



LVT Brushed Lines Colour Alabaster Installed Ashlar
Carpet Tile NY+LON Streets | Broome street Colour Teal Glass Installed Non Directional
Carpet Tile NY+LON Streets | Mercer street Colour Graphite Circle Installed Monolithic

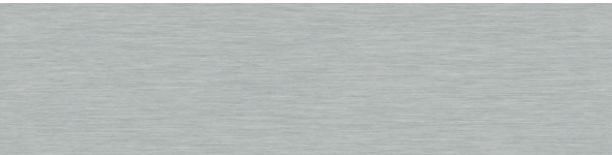
Brushed Lines™ Colourline



A016-01 Talc



A016-07 Powder



A016-02 Alabaster



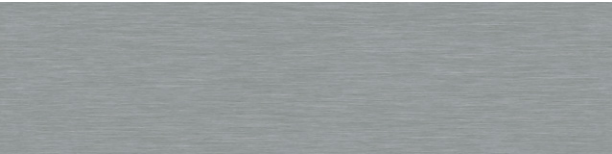
A016-08 Sandalwood



A016-03 Mist



A016-09 Paraffin



A016-04 Galena



A016-10 Bisque



A016-05 Graphite



A016-11 Mousse



A016-06 Kohl



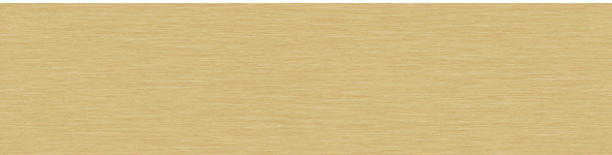
A016-12 Soft Shadow



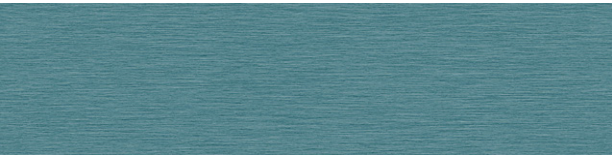
A016-13 Blush



A016-19 Eucalyptus



A016-14 Honey



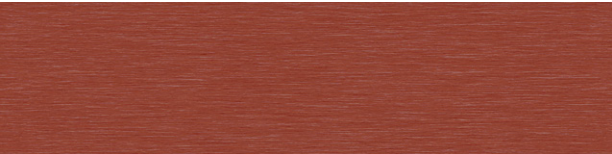
A016-20 Teal Oxide



A016-15 Henna



A016-21 Arbella



A016-16 Rouge



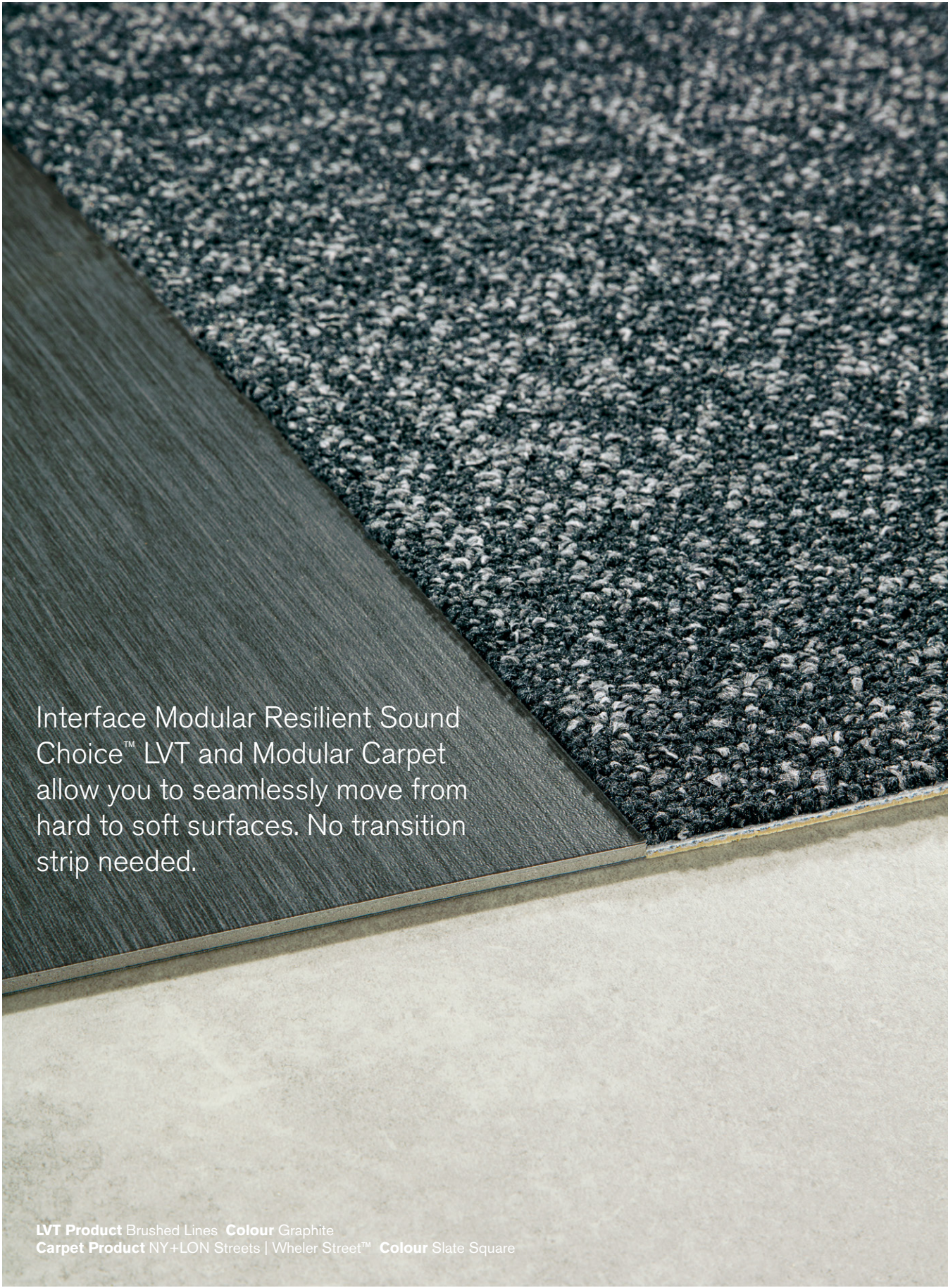
A016-22 Deep Cobalt



A016-17 Dew



A016-18 Celadon



Interface Modular Resilient Sound Choice™ LVT and Modular Carpet allow you to seamlessly move from hard to soft surfaces. No transition strip needed.

LVT Product Brushed Lines Colour Graphite
Carpet Product NY+LON Streets | Wheler Street™ Colour Slate Square

Why Our Modular Resilient LVT?

Integrated System.

Say goodbye to transition strips and doubling up. Our modular resilient floorings are made to work as a system with our modular carpet tile. The compatible size and height of our products allows you to integrate modular carpet for an inset rug or an adjacent field – no transition strip required. You'll avoid doubling up on materials and save cost.

Real Flexibility.

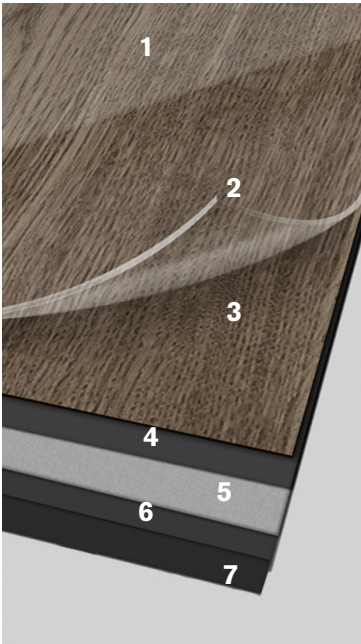
Create a unique look that lasts. Interface modular resilient LVT makes it easy to extend the life of your floor. From simple maintenance like damp mopping to selectively replacing damaged tiles, your flooring investment will stand the test of time - beautifully and effortlessly.

Circular System.

Keep flooring out of the landfill. Our modular resilient LVT is produced with a controlled material stream so it can be reclaimed and recycled into our GlasBac™RE recycled content backing through our ReEntry® program.

Noise Reduction.

Less distractions. Interface is helping create **+Positive spaces™** with our LVT with Sound Choice™ backing, offering you best-in-class performance for reduced impact sound and floor to floor sound transmission.



High Performance from Top to Bottom.

- 1. *Ceramor® Coating.* Minimizes everyday scratching and scuffing.
- 2. *Wear Layer.* High quality layer enabling 15 years of resilience and performance.
- 3. *Print Film.* Provides outstanding visuals of natural materials and Interface innovative designs.
- 4. *Core Sheet.* Creates a thickness for a stronger core and reduces telegraphing from beneath.
- 5. *Fiberglass.* Adds dimensional stability and controlled flexibility.
- 6. *Core Sheet.* Creates a thickness for a stronger core and reduces telegraphing from beneath.
- 7. *Sound Choice™.* Provides comfort and superior acoustic performance.

Third Party Certification.

Carbon Neutral Floors. All Interface flooring sold globally is third party verified carbon neutral. We've taken a holistic approach to achieve carbon neutrality, first through reducing the carbon footprint of our products and then using carbon offsets for the remainder.

Environmental Product Declaration (EPD). Interface LVT products are covered by an EPD. An EPD provides a comprehensive statement of product ingredients and environmental impacts based upon life cycle assessment performed to ISO standards.

Sustainable Assessment. Interface LVT meets the certification standards of the NSF/ANSI 332 Sustainability Assessment for Resilient Floor Coverings. This standard evaluates the environmental impact of resilient floor covering for its entire lifecycle.

Indoor Air Quality. All Interface modular flooring products meet the highest standards for indoor air quality. Interface LVT is FloorScore® Certified, assuring very low emissions of VOCs.

Specifications

Brushed Lines™ | LVT

Product Name / Number	A016
Product Construction	High Performance Luxury Vinyl Tile
Wear Layer Thickness	0.55 mm
Total Thickness (Metric)	4.5 mm
Classification	EN 651 Class 33 (heavy contract) EN 651 Class 42 (light industrial general)
Acoustic Impact Noise Reduction	ISO 140.8 ΔLw = 16dB
Finish	CERAMOR® UV Stabilized Ceramic Bead Coating
Nominal Dimensions	25cm x 100cm

Performance Specifications

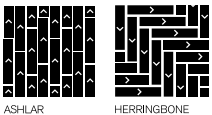
Critical Heat Flux	AS ISO 9239-1	>7kW/m2
Smoke Rate	AS ISO 9239-1	<750%.min
Size, Tolerance	ISO 24342	>400 mm < 0.35 mm
	ISO 24342	<400 mm < 0.25 mm
	ISO 23999	<0.25%
Dimensional Stability	ISO 24346	Average value + 0.20mm
Thickness	ISO 105-B02	≥6
Resistance to Light	ASTM F1514	ΔE< 8 avg Max
Resistance to Heat	EN-ISO 26987	Pass
Resistance to Chemicals	EN ISO 13501-1	Class BFI-S1
Reaction to Fire	ISO 10580	Pass
VOC Test	ISO 24344 Method A	Pass
Flexibility	ASTM F970	≤0.005" with 1500 psi
Static Load	ISO 4918	Pass
Castor chair	EN 12667	0.16 W/mK
Thermal Conductivity	EN 1815	<2kV
Static Electrical	AS 4586:2014	R10
Slip Resistance		

Environmental Specifications

Ingredients and Life Cycle Impacts	EPD for LVT
Sustainability Assessment	NSF/ANSI 332, Meets Certification Guidelines
LEED v4	Contributes to IEQ: Low Emitting Materials; M&R: EPD and EPR
End of Life	Fully Recyclable to carpet tile Backing Recycling

Technical Information

Installation	See Interface LVT Installation Guidelines online
Maintenance	See Interface LVT Maintenance Guidelines online
Reclamation	Recyclable through ReEntry®
Warranty	15 Year Standard LVT Product Warranty
Installation Method	Ashlar, Herringbone



Production specifications are subject to normal manufacturing tolerances and may be changed without notice. Slight variation in colour among different production lots are normal and should be considered in the overall installation plan. Products covered by manufacturer's written warranty only. All other warranties, including without limitation any implied warranties of merchantability of fitness for particular purpose, are hereby disclaimed. Contact your representative for written warranty information.

www.interface.com

Australia

Interface Australia
local toll free: 1800 804 361

India

Interface India
tel: +91 80 4613 1313

South East Asia

Interface Asia
tel: +65 6478 1510

South Korea

Interface South Korea
tel: +82 2 555 1734

Japan

Interface Japan
tel: +81 3 5733 5211

Beijing

Interface China
tel: +86 10 6590 7810

Hong Kong

Interface China
tel: +852 2802 0838

Shanghai

Interface China
tel: +86 21 6340 3868

