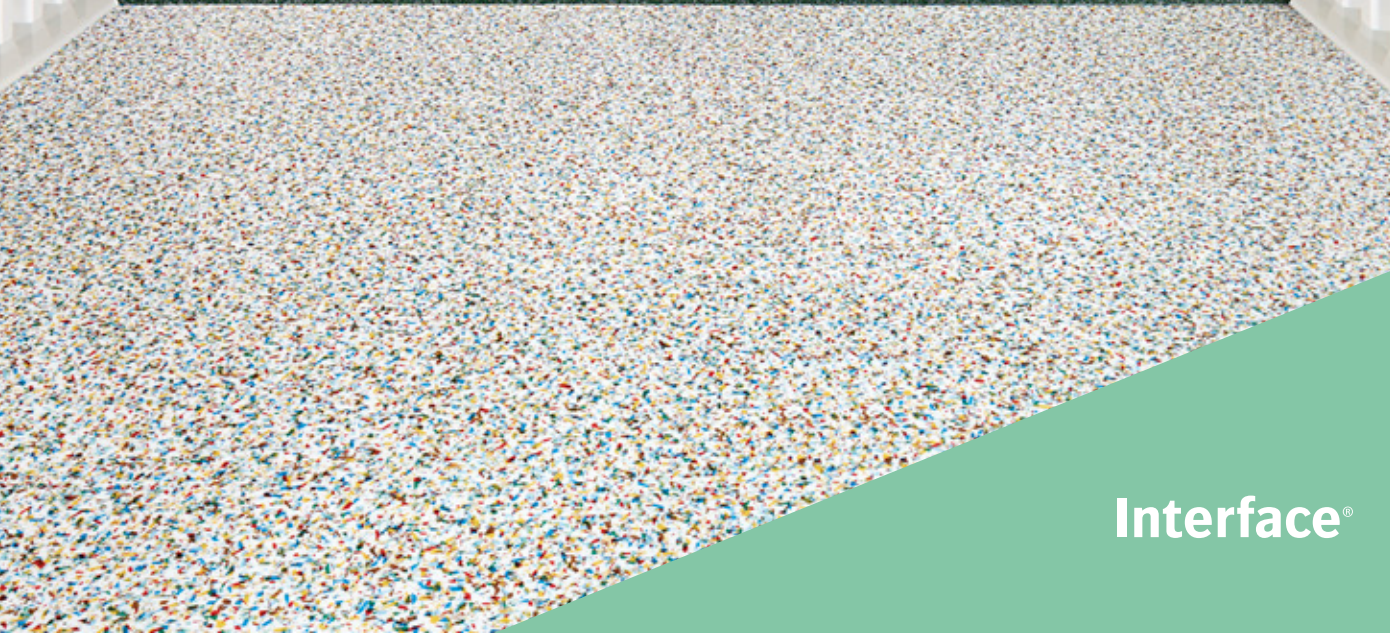


# Look Both Ways Collection | LVT



Interface®

Monolithic textures denoting gravity and substance live with light-hearted colour and confetti. Unexpected combinations of materials inspire creative outcomes. Celebrate the mix!

Look Both Ways is a collection of carpet tile and LVT patterns combining Zen-like purity with playfulness. Marrying purpose and function with your intention, these styles create landscapes that perform and delight in infinite ways.

Walk of Life™, the bedrock of the LVT collection, is gritty, not polished. Sharing the same urban grey palette, Walk the Aisle™ sparkles with a luminescent fleck that energizes the surface. Walk About™ appears carved in ways that conjure pattern-love from the 1920s, 1980s, and today. And finally Walk on By™ is a vision of pure joy in brights & neutrals. Step, walk or run, but definitely look both ways for design inspiration.

**Carbon Neutral Floors™** Like all of our products, globally, Look Both Ways is carbon neutral. Join us in creating a climate fit for life. **#ClimateTakeBack**





LVT WALK OF LIFE **COLOUR** COOL ASH LVT WALK THE AISLE **COLOUR** COOL ASH  
LVT WALK ABOUT **COLOUR** COOL ASH **INSTALLED** PATTERN BY TILE









LVT WALK THE AISLE COLOUR CARBON INSTALLED MONOLITHIC





[www.interface.com](http://www.interface.com)

LVT WALK ABOUT COLOUR PUMICE INSTALLED MONOLITHIC  
CARPET TILE STEP THIS WAY COLOUR ALBA INSTALLED BRICK





LVT WALK ON BY COLOUR MONOCHROME  
CARPET TILE STEP IN TIME COLOUR JET INSTALLED MONOLITHIC









LVT WALK ABOUT COLOUR CARBON  
LVT WALK OF LIFE COLOUR COOL ASH INSTALLED PATTERN BY TILE



**LVT WALK THE AISLE COLOUR CARBON**  
**POLYCHROME INSTALLED PATTERN BY TILE**



# Specifications

## Look Both Ways | LVT

Product Name / Number	Walk Of Life - A012 Walk The Aisle - A013 Walk About - A014 Walk On By - A015
Product Construction	High Performance Luxury Vinyl Tile
Wear Layer Thickness	0.55 mm
Total Thickness (Metric)	4.5 mm
Classification	EN 651 Class 33 (heavy contract) EN 651 Class 42 (light industrial general)
Acoustic Impact Noise Reduction	ISO 140.8 ΔLw = 16dB
Finish	CERAMOR® UV Stabilized Ceramic Bead Coating
Nominal Dimensions	50cm x 50cm

### Performance Specifications

Critical Heat Flux	AS ISO 9239-1	>7kW/m2
Smoke Rate	AS ISO 9239-1	<750%.min
Size, Tolerance	ISO 24342	>400 mm < 0.35 mm
	ISO 24342	<400 mm < 0.25 mm
Dimensional Stability	ISO 23999	<0.25%
Thickness	ISO 24346	Average value + 0.20mm
Resistance to Light	ISO 105-B02	≥6
Resistance to Heat	ASTM F1514	ΔE< 8 avg Max
Resistance to Chemicals	EN-ISO 26987	Pass
Reaction to Fire	EN ISO 13501-1	Class BFI-S1
VOC Test	ISO 10580	Pass
Flexibility	ISO 24344 Method A	Pass
Static Load	ASTM F970	≤0.005" with 1500 psi
Castor chair	ISO 4918	Pass
Thermal Conductivity	EN 12667	0.16 W/mK
Static Electrical	EN 1815	<2kV
Slip Resistance	AS 4586:2014	R10

### Environmental Specifications

Ingredients and Life Cycle Impacts	EPD for LVT
Sustainability Assessment	NSF/ANSI 332, Meets Certification Guidelines
LEED v4	Contributes to IEQ: Low Emitting Materials; M&R: EPD and EPR
End of Life	Fully Recyclable to carpet tile Backing Recycling

### Technical Information

Installation	See Interface LVT Installation Guidelines online
Maintenance	See Interface LVT Maintenance Guidelines online
Reclamation	Recyclable through ReEntry®
Warranty	15 Year Standard LVT Product Warranty
Installation Method	Ashlar, Brick, Monolithic, Quarter Turn, Non Directional



ASHLAR



BRICK



MONOLITHIC



QUARTER-TURN



NON DIRECTIONAL

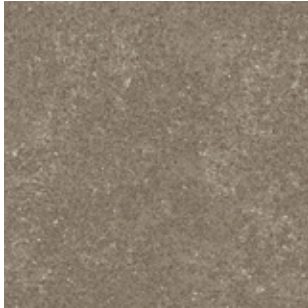
Production specifications are subject to normal manufacturing tolerances and may be changed without notice. Slight variation in colour among different production lots are normal and should be considered in the overall installation plan. Products covered by manufacturer's written warranty only. All other warranties, including without limitation any implied warranties of merchantability of fitness for particular purpose, are hereby disclaimed. Contact your representative for written warranty information.



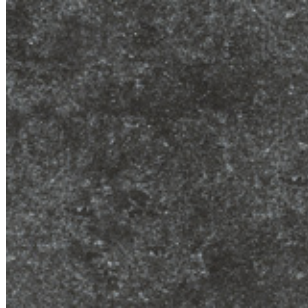
## Walk of Life™ Colourline

## Walk the Aisle™ Colourline

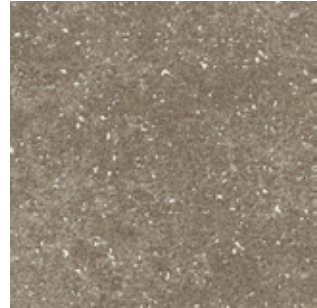
---



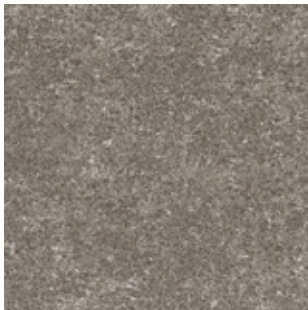
A012-01 WARM ASH



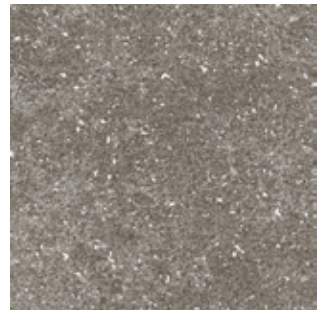
A012-05 CHARCOAL



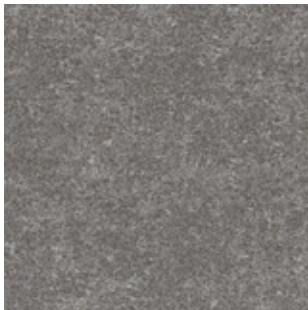
A013-01 WARM ASH



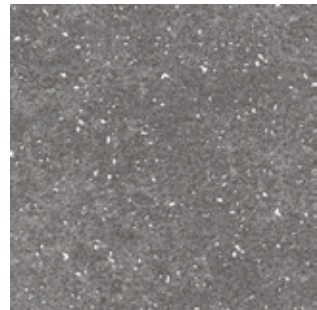
A012-02 PUMICE



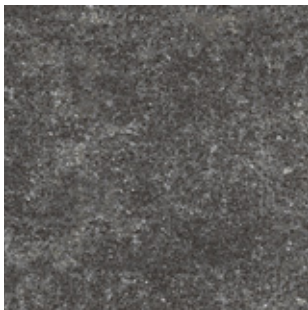
A013-02 PUMICE



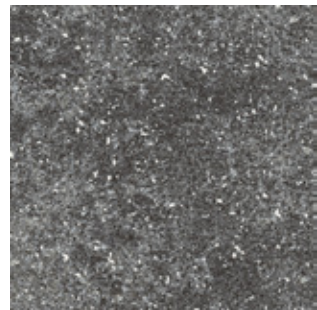
A012-03 COOL ASH



A013-03 COOL ASH



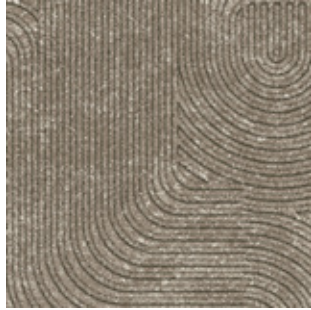
A012-04 CARBON



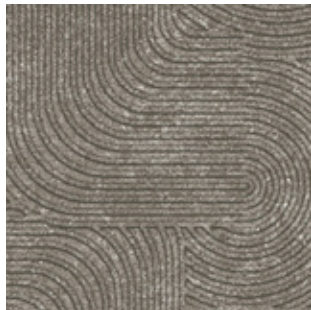
A013-04 CARBON



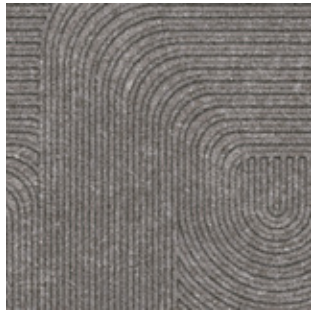
## Walk About™ Colourline



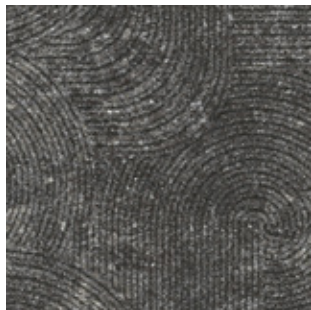
A014-01 WARM ASH



A014-02 PUMICE

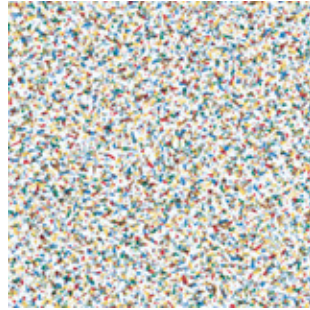


A014-03 COOL ASH



A014-04 CARBON

## Walk on By™ Colourline



A015-01 POLYCHROME



A015-02 MONOCHROME

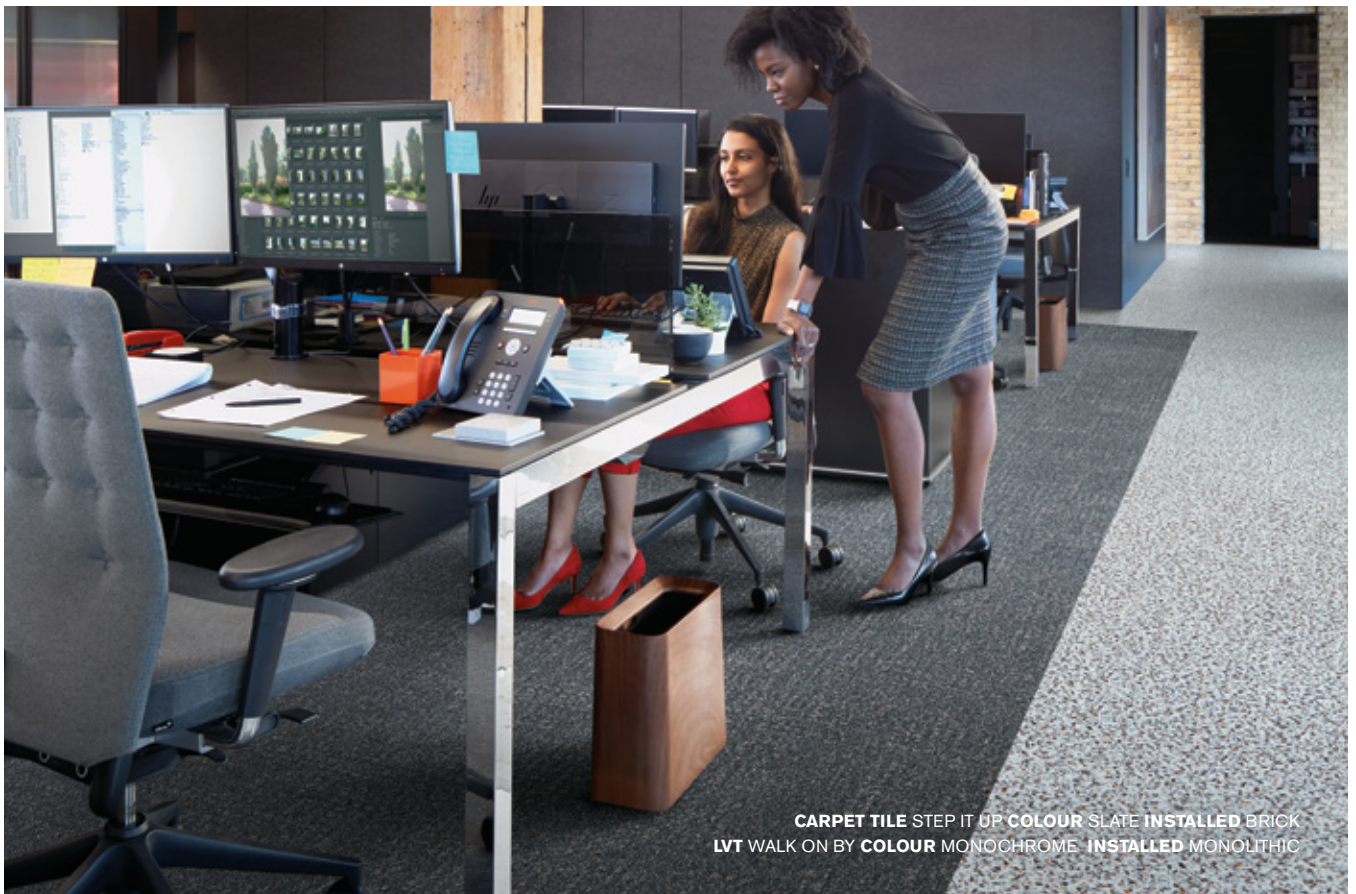


## LVT & Carpet. A power duo.


Look Both Ways combines hard and soft flooring with intentional design, which makes choosing the right materials for your space even easier. Seamlessly move from carpet tile in a private work area to LVT in a busy corridor, without changing patterns or using transition strips. Brighten a small, but heavily trafficked space with a lighter shade of LVT and create nested areas with inset area rugs. Every mix is a match with no sacrifice of performance or aesthetics.











Interface Modular Resilient LVT  
and Modular Carpet allow you to  
seamlessly move from hard to soft  
surfaces. No transition strip needed.

LVT WALK THE AISLE COLOUR COOL ASH  
CARPET TILE STEP IN TIME COLOUR ASH



## Integrated System.

*Say goodbye to transition strips and doubling up.* Our modular resilient floorings are made to work as a system with our modular carpet tile. The compatible size and height of our products allows you to integrate modular carpet for an inset rug or an adjacent field – no transition strip required. You'll avoid doubling up on materials and save cost.

## Real Flexibility.

*Create a unique look that lasts.* Interface modular resilient LVT makes it easy to extend the life of your floor. From simple maintenance like damp mopping to selectively replacing damaged tiles, your flooring investment will stand the test of time - beautifully and effortlessly.

## Circular System.

*Keep flooring out of the landfill.* Our modular resilient LVT is produced with a controlled material stream so it can be reclaimed and recycled into our GlasBac™RE recycled content backing through our ReEntry® program.

## Noise Reduction.

*Less distractions.* Interface is helping create **+Positive spaces™** with our LVT with Sound Choice™ backing, offering you best-in-class performance for reduced impact sound and floor to floor sound transmission.



## Why Our Modular Resilient LVT? (continued)



### High Performance from Top to Bottom.

- 1. Ceramor® Coating.** Minimizes everyday scratching and scuffing.
- 2. Wear Layer.** High quality layer enabling 15 years of resilience and performance.
- 3. Print Film.** Provides outstanding visuals of natural materials and Interface innovative designs.
- 4. Core Sheet.** Creates a thickness for a stronger core and reduces telegraphing from beneath.
- 5. Fiberglass.** Adds dimensional stability and controlled flexibility.
- 6. Core Sheet.** Creates a thickness for a stronger core and reduces telegraphing from beneath.
- 7. Sound Choice™.** Provides comfort and superior acoustic performance.

### Third Party Certification.

**Carbon Neutral Floors.** All Interface flooring sold globally is third party verified carbon neutral. We've taken a holistic approach to achieve carbon neutrality, first through reducing the carbon footprint of our products and then using carbon offsets for the remainder.

**Environmental Product Declaration (EPD).** Interface LVT products are covered by an EPD. An EPD provides a comprehensive statement of product ingredients and environmental impacts based upon life cycle assessment performed to ISO standards.

**Sustainable Assessment.** Interface LVT meets the certification standards of the NSF/ANSI 332 Sustainability Assessment for Resilient Floor Coverings. This standard evaluates the environmental impact of resilient floor covering for its entire lifecycle.

**Indoor Air Quality.** All Interface modular flooring products meet the highest standards for indoor air quality. Interface LVT is FloorScore® Certified, assuring very low emissions of VOCs.



**Carbon Neutral Floors™**  
All of our products are carbon neutral and our programme is verified by an independent third party, Bureau Veritas.



CERTIFIED BY  
SCS Global Services





As part of Interface's Mission Zero promise to eliminate any negative impact on the environment by 2020, we always consider the environment impact of every creative, manufacturing and building decision. This sample book is printed on recycled paper and with soy based ink. Twenty four virgin trees were saved from our use of 1725kg of recycled paper in the production of 5000 sample books. Energy intensity also decreased and greenhouse gases were reduced. The other reductions came from waste water and solid waste. Through our sample reclamation program, we help keep sample materials out of landfill by re-using them until it is time to recycle these sample materials.

**[www.interface.com](http://www.interface.com)**

**South East Asia**

Interface Asia  
tel: 65-6478 1510  
[www.interface.com](http://www.interface.com)

**South Korea**

tel. 82-2-555 1734  
[www.interface.com](http://www.interface.com)

**Japan**

Interface Japan  
tel: 81-3-5733 5211  
[www.interface.com](http://www.interface.com)

**India**

Interface India  
tel: 91 80 46131313  
[www.interface.com](http://www.interface.com)

**Beijing Studio**

Interface China  
tel: 86-10-6590 7810  
[www.interface.com.cn](http://www.interface.com.cn)

**Hongkong Studio**

Interface China  
tel: 852-2802 0838  
[www.interface.com.cn](http://www.interface.com.cn)

**Shanghai Studio**

Interface China  
tel: 86-21-6340 3868  
[www.interface.com.cn](http://www.interface.com.cn)

**Australia**

Interface Australia  
local toll free: 1800 804 361  
[www.interface.com](http://www.interface.com)

05/2019  
SF0118T0



Climate change is undeniable. And reversible. Our mission is to prove it. Join the #ClimateTakeBack and help create a climate fit for life.