

As part of Interface's Mission Zero promise to eliminate any negative impact on the environment by 2020, we always consider the environment impact of every creative, manufacturing and building decision. This sample book is printed on recycled paper and with soy based ink. Twenty four virgin trees were saved from our use of 1725kg of recycled paper in the production of 5000 sample books. Energy intensity also decreased and greenhouse gases were reduced. The other reductions came from waste water and solid waste. Through our sample reclamation program, we help keep sample materials out of landfill by re-using them until it is time to recycle these sample materials.

www.interface.com

South East Asia

Interface Asia
tel: 65-6478 1510
www.interface.com

South Korea

tel: 82-2-555 1734
www.interface.com

Japan

Interface Japan
tel: 81-3-5733 5211
www.interface.com

India

Interface India
tel: 91 80 46131313
www.interface.com

Beijing Studio

Interface China
tel: 86-10-6590 7810
www.interface.com.cn

Hongkong Studio

Interface China
tel: 852-2802 0838
www.interface.com.cn

Shanghai Studio

Interface China
tel: 86-21-6340 3868
www.interface.com.cn

Australia

Interface Australia
local toll free: 1800 008 101
www.interface.com

05/2018
SF0109T0



Climate change is undeniable. And reversible. Our mission is to prove it.
Join the #ClimateTakeBack and help create a climate fit for life.

Visual Code Collection



Interface®

AI, VR, robotics and smart everything. Hi-tech tools are sleek, enticing and fast, but they can be a distraction from creative thinking. Engagement with the natural world and real, “hi-touch” things like hand-crafted materials and goods, humanize experience, slow it down and restore imagination and wonder.

Visual Code is a collection of ten different patterns inspired by the symbiotic relationship of hi-tech and hi-touch, marrying images of glitch graphics and technicolor circuitry with simple textures that recall plain woven fabrics and rugs.

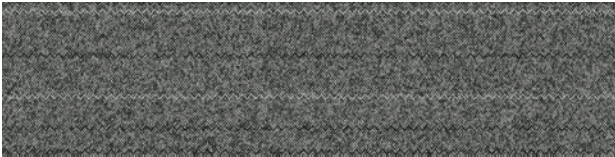
Based on simple textiles in shades of gray, Stitch Count™, Stitchery™ and Plain Stitch™ set the groundwork for the collection. In contrast, Hard Drive™ and Static Lines™ scramble colors, mimicking a monitor “glitch”. Bright, bold Circuit Board™ is at once precisely like wiring and vaguely like an ancient tribal motif. And finally, striking the balance are four black and white textures that recall handwoven rugs from another time and place.

Each style in Visual Code is made with 100% recycled content nylon, just one of the many steps we take toward creating a climate fit for life. Join the **#climatetakeback** movement.

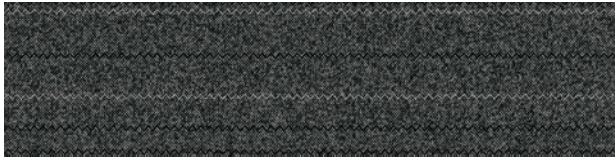




Plain Stitch™ Colourline



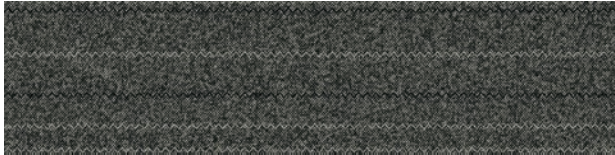
9278-001-000 NICKEL PLAIN



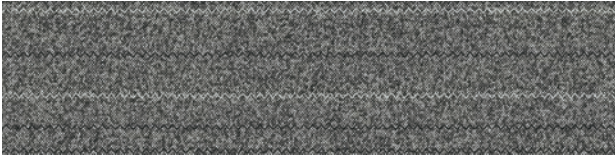
9278-002-000 IRON PLAIN



9278-003-000 GREY PLAIN



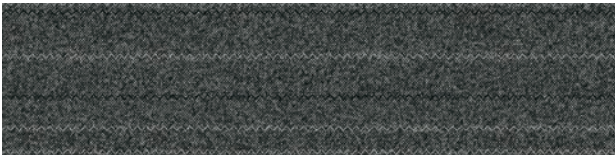
9278-004-000 GRAPHITE PLAIN



9278-005-000 FLINT PLAIN



9278-006-000 CHARCOAL PLAIN



9278-007-000 SLATE PLAIN



9278-008-000 BLACK PLAIN



PRODUCT PLAIN STITCH COLOURS FLINT PLAIN, CHARCOAL PLAIN INSTALLED ASHLAR



Stitchery™ Colourline



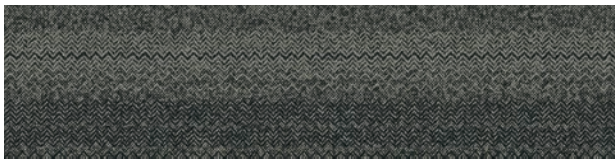
9281-001-000 NICKEL STITCHERY



9281-002-000 IRON STITCHERY



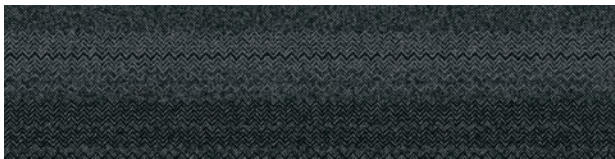
9281-003-000 GREY STITCHERY



9281-004-000 GRAPHITE STITCHERY



9281-005-000 FLINT STITCHERY



9281-006-000 CHARCOAL STITCHERY

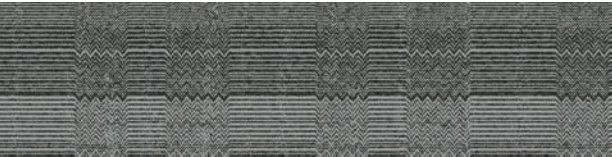


9281-007-000 SLATE STITCHERY

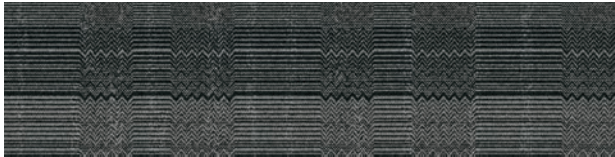


9281-008-000 BLACK STITCHERY

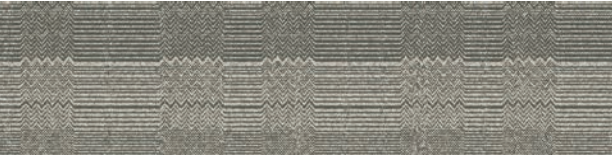
Stitch Count™ Colourline



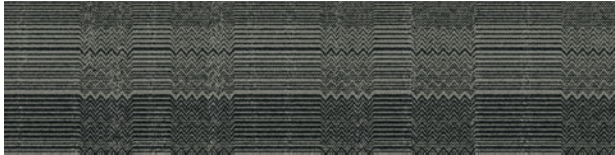
9279-001-000 NICKEL COUNT



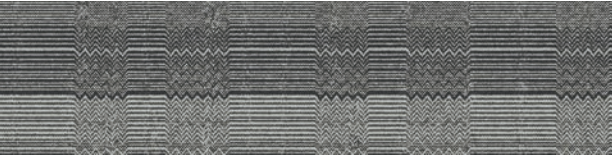
9279-002-000 IRON COUNT



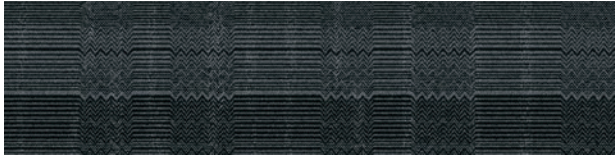
9279-003-000 GREY COUNT



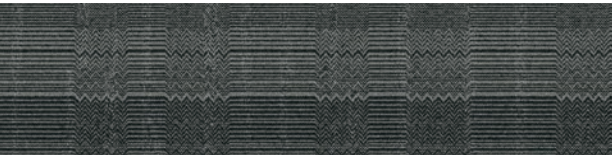
9279-004-000 GRAPHITE COUNT



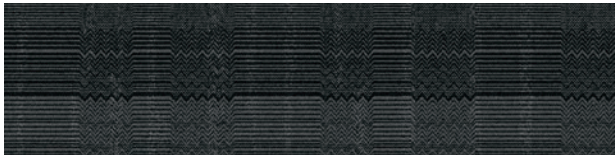
9279-005-000 FLINT COUNT



9279-006-000 CHARCOAL COUNT



9279-007-000 SLATE COUNT



9279-008-000 BLACK COUNT





PRODUCT PLAIN STITCH **COLOUR** IRON PLAIN **PRODUCT** STITCHERY
COLOUR NICKEL STITCHERY **PRODUCT** CIRCUIT BOARD **COLOUR** YELLOW CIRCUIT
INSTALLED PATTERN BY TILE

www.interface.com



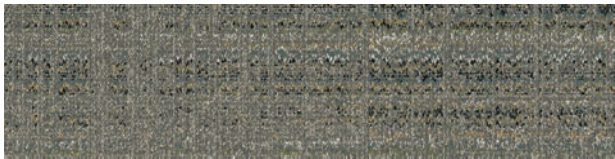
PRODUCT STATIC LINES **COLOUR** GRANITE STATIC
PRODUCT HARD DRIVE **COLOUR** GRANITE HD **INSTALLED** ASHLAR



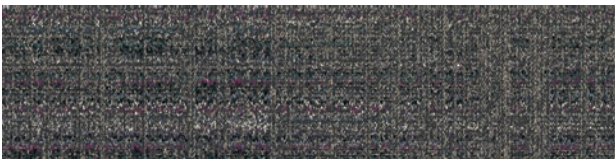
Static Lines™ Colourline



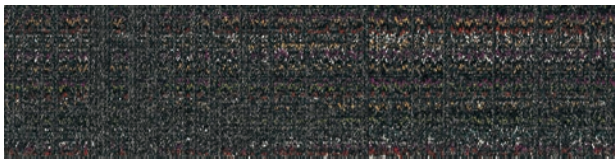
9276-001-000 STEEL STATIC



9276-002-000 PEWTER STATIC



9276-003-000 LEAD STATIC

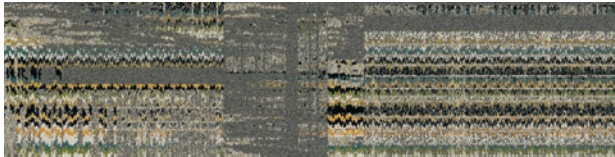


9276-004-000 GRANITE STATIC

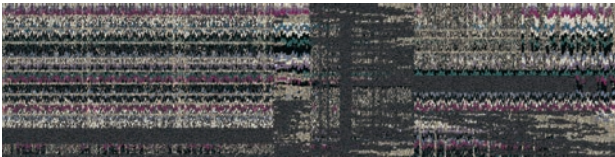
Hard Drive™ Colourline



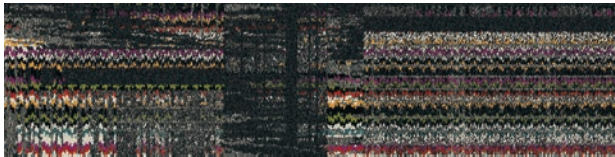
9277-001-000 STEEL HD



9277-002-000 PEWTER HD



9277-003-000 LEAD HD



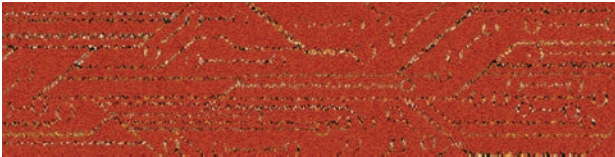
9277-004-000 GRANITE HD



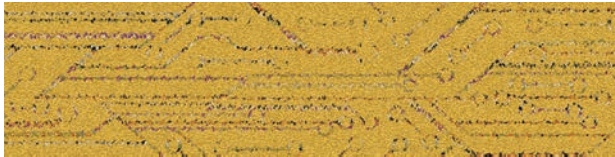
PRODUCT HARD DRIVE COLOUR PEWTER HD INSTALLED ASHLAR



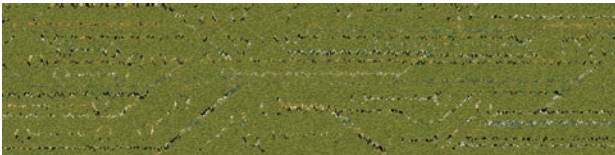
Circuit Board™ Colourline



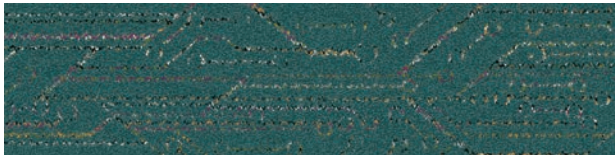
9280-001-000 ORANGE CIRCUIT



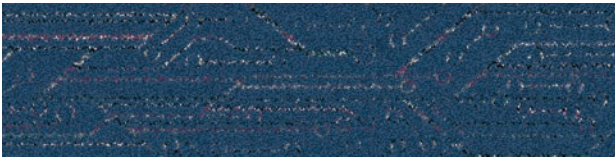
9280-002-000 YELLOW CIRCUIT



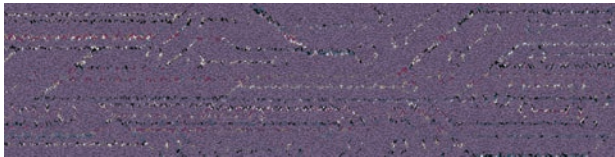
9280-003-000 GREEN CIRCUIT



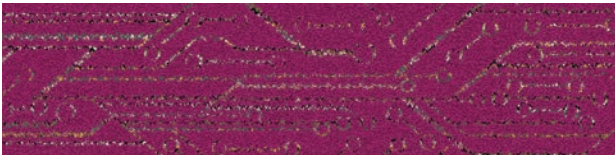
9280-004-000 TEAL CIRCUIT



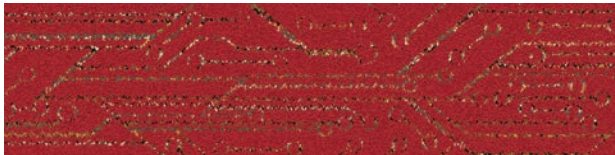
9280-005-000 BLUE CIRCUIT



9280-006-000 PURPLE CIRCUIT



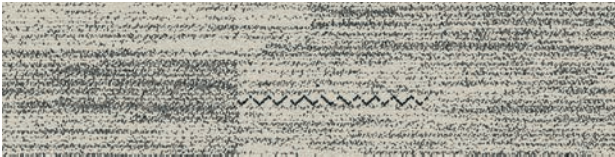
9280-007-000 MAGENTA CIRCUIT



9280-008-000 RED CIRCUIT



Darning™ Colourline



9273-001-000 B&W DARNING



PRODUCT DARNING COLOUR B&W DARNING INSTALLED ASHLAR



Haptic™ Colourline



9274-001-000 B&W HAPTIC

Overedge™ Colourline

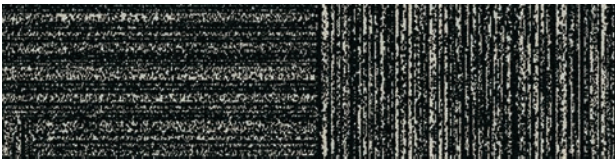


9271-001-000 B&W OVEREDGE





Decibel™ Colourline

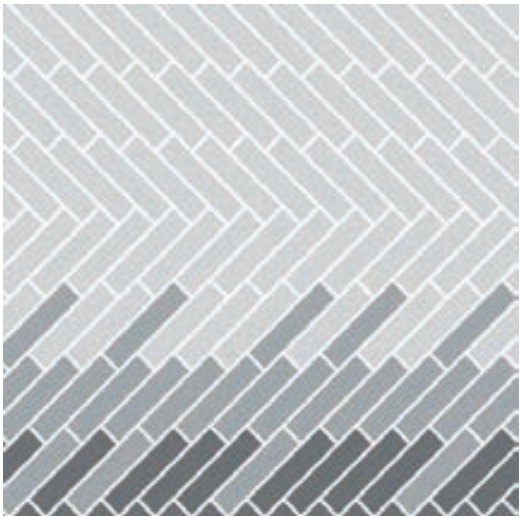


9275-001-000 B&W DECIBEL

Design Ideas Below are floor layouts showing how to create the design ideas shared in several of the images featured in this brochure.



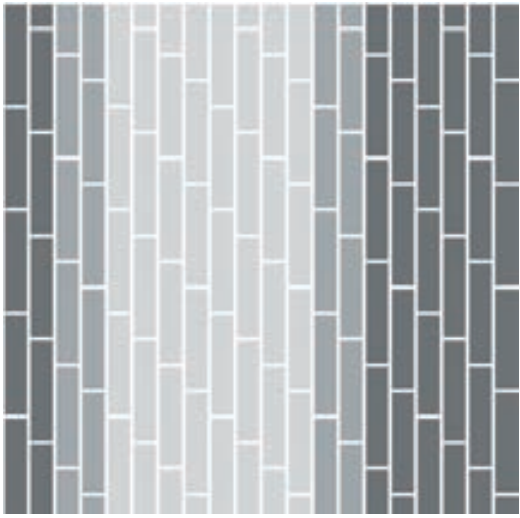
PRODUCT STATIC LINES **COLOUR** LEAD STATIC
PRODUCT CIRCUIT BOARD **COLOUR** BLUE CIRCUIT
PRODUCT HAPTIC **COLOUR** B&W HAPTIC **INSTALLED** PATTERN BY TILE (ASHLAR)



PRODUCT STATIC LINES **COLOUR** PEWTER STATIC **PRODUCT** HARD DRIVE **COLOUR** PEWTER HD **PRODUCT** CIRCUIT BOARD
COLOURS ORANGE CIRCUIT, YELLOW CIRCUIT, GREEN CIRCUIT, TEAL CIRCUIT, BLUE CIRCUIT, PURPLE CIRCUIT, MAGENTA CIRCUIT, RED CIRCUIT
PRODUCT DARNING **COLOUR** B&W DARNING **INSTALLED** PATTERN BY TILE (ASHLAR)



PRODUCT STITCH COUNT **COLOUR** GREY COUNT
PRODUCT STITCHERY **COLOUR** GREY STITCHERY
PRODUCT PLAIN STITCH **COLOUR** GREY PLAIN **INSTALLED** ASHLAR



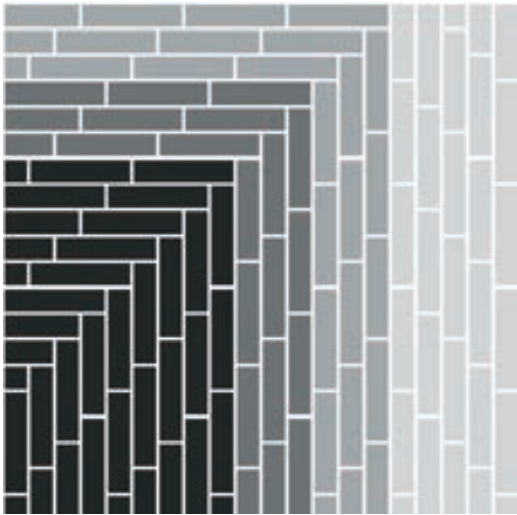
PRODUCT STITCHERY **COLOUR** SLATE STITCHERY
PRODUCT STATIC LINES **COLOUR** STEEL STATIC
PRODUCT CIRCUIT BOARD **COLOUR** ORANGE CIRCUIT **INSTALLED** PATTERN BY TILE



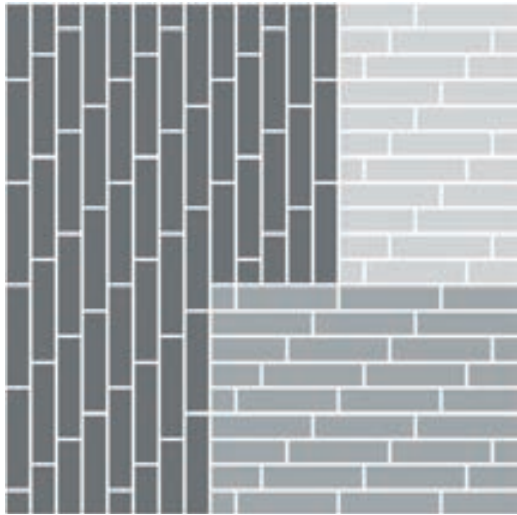
Design Ideas Below are floor layouts showing how to create the design ideas shared in several of the images featured in this brochure.



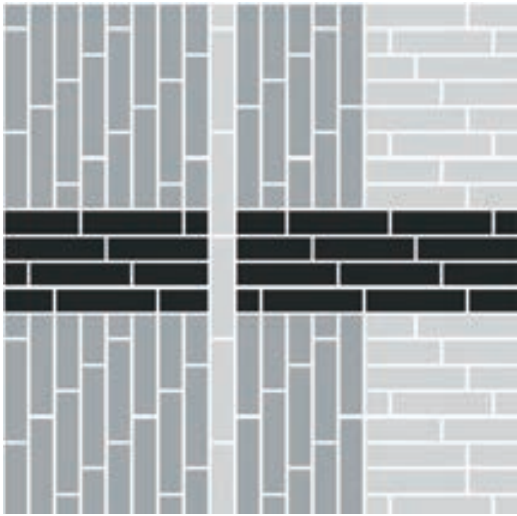
PRODUCT PLAIN STITCH **COLOUR** GRAPHITE PLAIN **PRODUCT** STITCHERY **COLOUR** GRAPHITE STITCHERY
PRODUCT STITCH COUNT **COLOUR** GRAPHITE COUNT **PRODUCT** HAPTIC **COLOUR** B&W HAPTIC
INSTALLED PATTERN BY TILE (ASHLAR)



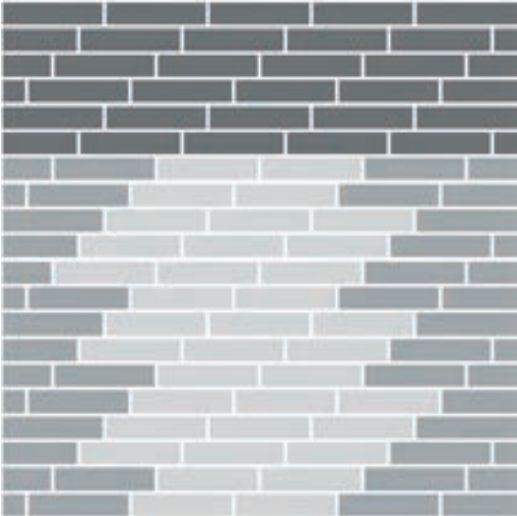
PRODUCT DARNING **COLOUR** B&W DARNING
PRODUCT OVEREDGE **COLOUR** B&W OVEREDGE
PRODUCT DECIBEL **COLOUR** B&W DECIBEL **INSTALLED** PATTERN BY TILE (ASHLAR)



PRODUCT PLAIN STITCH **COLOUR** IRON PLAIN
PRODUCT STITCHERY **COLOUR** NICKEL STITCHERY
PRODUCT CIRCUIT BOARD **COLOUR** YELLOW CIRCUIT **INSTALLED** PATTERN BY TILE (ASHLAR)



CARPET PRODUCT STATIC LINES **COLOUR** STEEL STATIC
CARPET PRODUCT HARD DRIVE **COLOUR** STEEL HD
LVT PRODUCT STUDIO SET™ **COLOUR** PEWTER **INSTALLED** PATTERN BY TILE (ASHLAR)



Specifications

Plain Stitch™

Style Code	9278 Pattern 000
Product Definition	Tufted Textured Loop
Yarn/Fibre	BCF Nylon Type 6 – 100% Recycled Content
Colour System	100% Solution Dyed
Machine Gauge	1/10
Pile Thickness	2.0mm +/- 0.5mm
Total Thickness	5.5mm +/- 0.5mm
Tile Size	25x100cm
Area of Use	Commercial – Heavy Use
Lifetime Antimicrobial	Intersept®
Soil/Stain Protection	Protekt²®
Total Recycled Content	GlasBac® 65% to 70% Total Recycled Content GlasBac®RE 80% to 85% Total Recycled Content
Installation Methods	Ashlar, Herringbone



Stitchery™

Style Code	9281 Pattern 000
Product Definition	Tufted Textured Loop
Yarn/Fibre	BCF Nylon Type 6 – 100% Recycled Content
Colour System	100% Solution Dyed
Machine Gauge	1/10
Pile Thickness	2.0mm +/- 0.5mm
Total Thickness	5.5mm +/- 0.5mm
Tile Size	25x100cm
Area of Use	Commercial – Heavy Use
Lifetime Antimicrobial	Intersept®
Soil/Stain Protection	Protekt²®
Total Recycled Content	GlasBac® 65% to 70% Total Recycled Content GlasBac®RE 80% to 85% Total Recycled Content
Installation Methods	Ashlar, Herringbone



Stitch Count™

Style Code	9279 Pattern 000
Product Definition	Tufted Textured Tip Sheared Loop
Yarn/Fibre	BCF Nylon Type 6 – 100% Recycled Content
Colour System	100% Solution Dyed
Machine Gauge	1/10
Pile Thickness	4.0mm +/- 0.5mm
Total Thickness	8.5mm +/- 0.5mm
Tile Size	25x100cm
Area of Use	Commercial – Heavy Use
Lifetime Antimicrobial	Intersept®
Soil/Stain Protection	Protekt²®
Total Recycled Content	GlasBac® 65% to 70% Total Recycled Content GlasBac®RE 80% to 85% Total Recycled Content
Installation Methods	Ashlar, Herringbone



Static Lines™

Style Code	9276 Pattern 000
Product Definition	Tufted Textured Loop
Yarn/Fibre	BCF Nylon Type 6 – 100% Recycled Content
Colour System	100% Solution Dyed
Machine Gauge	1/10
Pile Thickness	3.0mm +/- 0.5mm
Total Thickness	6.5mm +/- 0.5mm
Tile Size	25x100cm
Area of Use	Commercial – Heavy Use
Lifetime Antimicrobial	Intersept®
Soil/Stain Protection	Protekt²®
Total Recycled Content	GlasBac® 65% to 70% Total Recycled Content GlasBac®RE 80% to 85% Total Recycled Content
Installation Methods	Ashlar, Herringbone



Hard Drive™

Style Code	9277 Pattern 000
Product Definition	Tufted Textured Loop
Yarn/Fibre	BCF Nylon Type 6 – 100% Recycled Content
Colour System	100% Solution Dyed
Machine Gauge	1/10
Pile Thickness	3.5mm +/- 0.5mm
Total Thickness	7.0mm +/- 0.5mm
Tile Size	25x100cm
Area of Use	Commercial – Heavy Use
Lifetime Antimicrobial	Intersept®
Soil/Stain Protection	Protekt²®
Total Recycled Content	GlasBac® 65% to 70% Total Recycled Content GlasBac®RE 80% to 85% Total Recycled Content
Installation Methods	Ashlar, Herringbone



Circuit Board™

Style Code	9280 Pattern 000
Product Definition	Tufted Textured Loop
Yarn/Fibre	BCF Nylon Type 6 – 100% Recycled Content
Colour System	100% Solution Dyed
Machine Gauge	1/10
Pile Thickness	3.0mm +/- 0.5mm
Total Thickness	7.0mm +/- 0.5mm
Tile Size	25x100cm
Area of Use	Commercial – Heavy Use
Lifetime Antimicrobial	Intersept®
Soil/Stain Protection	Protekt²®
Total Recycled Content	GlasBac® 65% to 70% Total Recycled Content GlasBac®RE 80% to 85% Total Recycled Content
Installation Methods	Ashlar, Herringbone



Specifications

Darning™

Style Code	9273 Pattern 000
Product Definition	Tufted Textured Loop
Yarn/Fibre	BCF Nylon Type 6 – 100% Recycled Content
Colour System	100% Solution Dyed
Machine Gauge	1/10
Pile Thickness	3.0mm +/- 0.5mm
Total Thickness	6.5mm +/- 0.5mm
Tile Size	25x100cm
Area of Use	Commercial – Heavy Use
Lifetime Antimicrobial	Intersept®
Soil/Stain Protection	Protekt²®
Total Recycled Content	GlasBac® 65% to 70% Total Recycled Content GlasBac®RE 80% to 85% Total Recycled Content
Installation Methods	Ashlar, Herringbone



Haptic™

Style Code	9274 Pattern 000
Product Definition	Tufted Textured Loop
Yarn/Fibre	BCF Nylon Type 6 – 100% Recycled Content
Colour System	100% Solution Dyed
Machine Gauge	1/10
Pile Thickness	3.0mm +/- 0.5mm
Total Thickness	7.0mm +/- 0.5mm
Tile Size	25x100cm
Area of Use	Commercial – Heavy Use
Lifetime Antimicrobial	Intersept®
Soil/Stain Protection	Protekt²®
Total Recycled Content	GlasBac® 65% to 70% Total Recycled Content GlasBac®RE 80% to 85% Total Recycled Content
Installation Methods	Ashlar, Herringbone



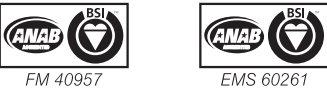
Overedge™

Style Code	9271 Pattern 000
Product Definition	Tufted Cut Pile
Yarn/Fibre	BCF Nylon Type 6 – 100% Recycled Content
Colour System	100% Solution Dyed
Machine Gauge	5/32
Pile Thickness	7.5mm +/- 0.5mm
Total Thickness	11.5mm +/- 0.5mm
Tile Size	25x100cm
Area of Use	Commercial – General Use
Lifetime Antimicrobial	Intersept®
Soil/Stain Protection	Protekt²®
Total Recycled Content	GlasBac® 65% to 70% Total Recycled Content GlasBac®RE 80% to 85% Total Recycled Content
Installation Methods	Ashlar, Herringbone



Decibel™

Style Code	9275 Pattern 000
Product Definition	Tufted Textured Loop
Yarn/Fibre	BCF Nylon Type 6 – 100% Recycled Content
Colour System	100% Solution Dyed
Machine Gauge	1/10
Pile Thickness	3.0mm +/- 0.5mm
Total Thickness	6.5mm +/- 0.5mm
Tile Size	25x100cm
Area of Use	Commercial – Heavy Use
Lifetime Antimicrobial	Intersept®
Soil/Stain Protection	Protekt²®
Total Recycled Content	GlasBac® 65% to 70% Total Recycled Content GlasBac®RE 80% to 85% Total Recycled Content
Installation Methods	Ashlar, Herringbone



CoolCarpet™ Intersept®

Production specifications are subject to normal manufacturing tolerances and may be changed without notice. Slight variation in colour among different production lots are normal and should be considered in the overall installation plan. Products covered by manufacturer's written warranty only. All other warranties, including without limitation any implied warranties of merchantability or fitness for particular purpose, are hereby disclaimed. Contact your representative for written warranty information. Recycled content calculations are based on historical averages by total weight of the product for backings. Yarn/Fibre recycled content calculation excludes backing. We update our recycled content information and other environmental data regularly to reflect changes and advancements in our technology.
*Cool Carpet is not a standard option in Australia and New Zealand.